



PS165P10Y◆1



PS165Z10Y◆1



PS161P10Y◆1



PS165P10Y◆1△▲



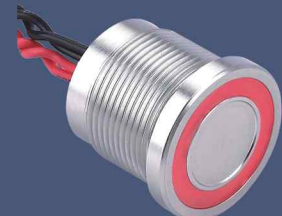
PS193P10Y◆1



PS193Z10Y◆1



PS193P10Y◆1△▲T



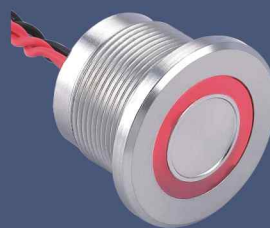
PS193P10Y◆1△▲L



PS223P10Y◆1



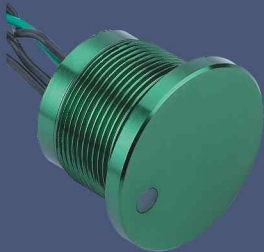
PS223Z10Y◆1



PS223P10Y◆1△▲T



PS225P10Y◆1△▲L



PS223P10Y◆1△▲D



PS225Z10Y◆1△▲D

Environmental specifications

- Sealing : IP68
- Vibration resistance : 10–500 Hz / 10 g
- Operating temperature : –40°C to +75°C

Materials

-
-
-
-

Electrical and general specifications

- Max. current/voltage rating : 1A 24VAC/DC or 200mA 24VAC/DC depending on version
- Switch resistance ON : 10 max.
- Switch resistance OFF : 5M min.
- Operating force : 2 to 6N
- Life expectancy : 50 million cycles
- LED consumption : Illuminated dot : 10mA – Illuminated ring : 20mA

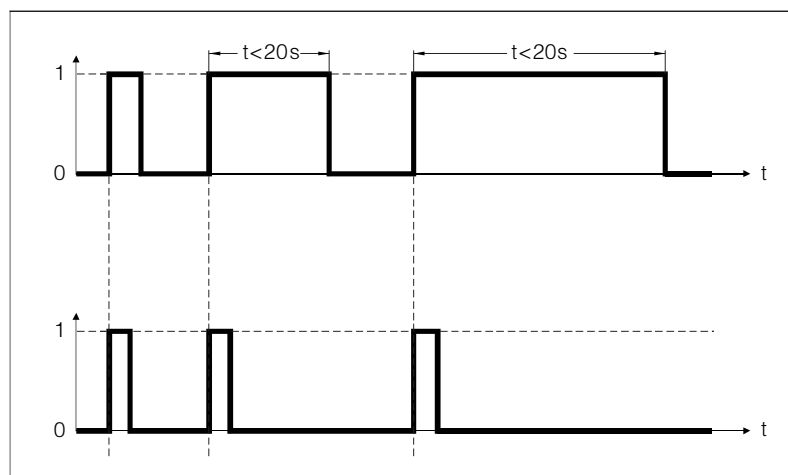
PS	16	★	□	□	◆	□	△	▲
Series	Mounting dimensions	Operator 5P Flat operator, height 4,5 1P Flat operator, height 1.0 (non illuminated) 5Z With finger location, height 4,5 (non-illuminated)	Electrical function 10 NO (pulse)	Terminals Y Lead(length 30mm) Other Lead length and connection mode can be customized.	Colours / Materials NT Natural anodized BU Blue anodized BK Black anodized GD Gold anodized RD Red anodized SS Stainless steel	Switch ratings 1 200mA 24VAC/DC	LED colour Blank Non-illum. R Red G Green Y Yellow O Orange B Blue W White	Lamp voltage Blank Non-illum. 05 Standard ring – 5VDC 12 Standard ring – 12VDC 24 Standard ring – 24VDC

PS	19	★	□	□	◆	□	△	▲
Series	Mounting dimensions	Operator 3P Flat operator, height 3.0 3Z with finger location, height 3.0	Electrical function 10 NO (pulse)	Terminals Y Lead(length 30mm) Other Lead length and connection mode can be customized.	Colours / Materials NT Natural anodized BU Blue anodized BK Black anodized GD Gold anodized RD Red anodized SS Stainless steel	Ratings 1 200mA 24VAC/DC	LED colour Blank Non-illum. R Red G Green Y Yellow O Orange B Blue W White	Lamp voltage Blank Non-illum. 05T thin ring – 5VDC 12T thin ring – 12VDC 24T thin ring – 24VDC 05L large ring – 5VDC 12L large ring – 12VDC 24L large ring – 24VDC

PS	22	★	□	□	◆	□	△	▲
Series	Mounting dimensions	3P Flat operator, height 3.0 (Not available with large illuminated ring.) 3Z With finger location, height 3.0, (Not available with illuminated ring). 5P Flat operator, height 4.5 (Available with large illuminated ring only.)	Electrical function A NO (pulse)	Terminals Y Lead(length 30mm) Other Lead length and connection mode can be customized.	Colours / Materials NT Natural anodized BU Blue anodized BK Black anodized GD Gold anodized RD Red anodized SS Stainless steel	Ratings 1 200mA 24VAC/DC	LED colour Blank Non-illum. R Red G Green Y Yellow O Orange B Blue W White	Lamp voltage Blank Non-illum. 05T thin ring – 5VDC 12T thin ring – 12VDC 24T thin ring – 24VDC 05L large ring – 5VDC 12L large ring – 12VDC 24L large ring – 24VDC 05D dot – 5VDC 12D dot – 12VDC 24D dot – 24VDC

Finger pressure applied to switch

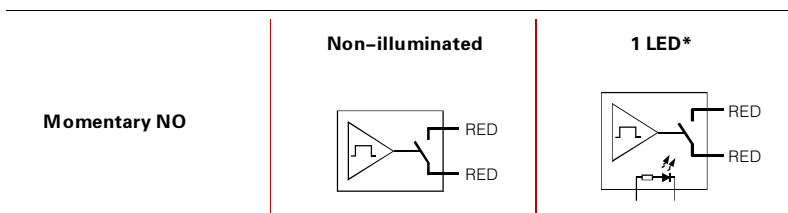
1 = pressure
0 = no pressure



Output

– Momentary NO (pulse)
No external power supply required

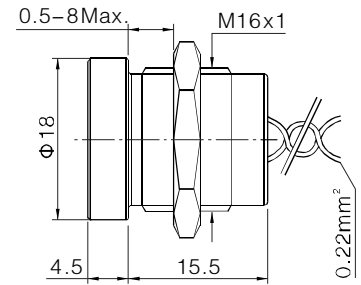
Wiring diagrams



Non-illuminated, operator height 4.50mm, flat



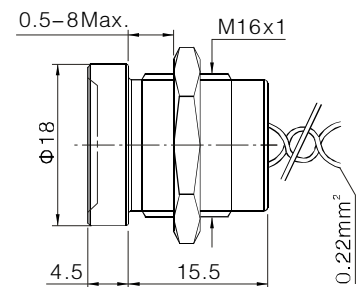
PS165P10Y◆1



Non-illuminated, operator height 4.50mm, with finger location



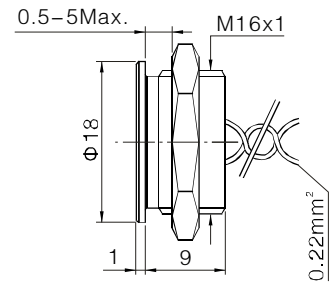
PS165Z10Y◆1



Non-illuminated, operator height 1mm, flat



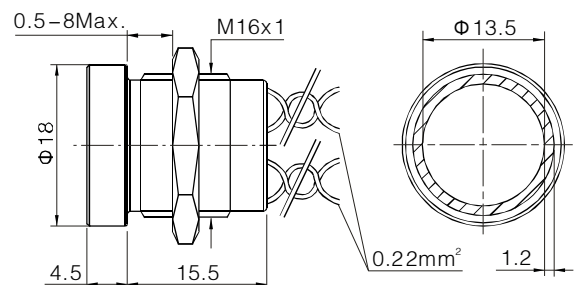
PS161P10Y◆1



With standard illuminated ring, operator height 4.50mm, flat



PS165P10Y◆1△▲

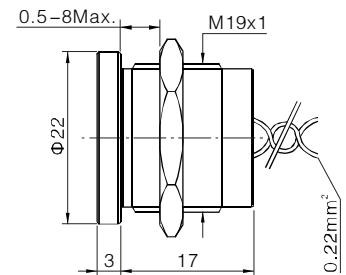


◆ Colours / Materials	△ LED colour	▲ Lamp voltage
NT Natural anodized	Blank Non-illum.	Blank Non-illum.
BU Blue anodized	R Red	05 Standard ring – 5VDC
BK Black anodized	G Green	12 Standard ring – 12VDC
GD Gold anodized	Y Yellow	24 Standard ring – 24VDC
RD Red anodized	O Orange	
SS Stainless steel	B Blue	
	W White	

Non-illuminated – operator height 3mm, flat



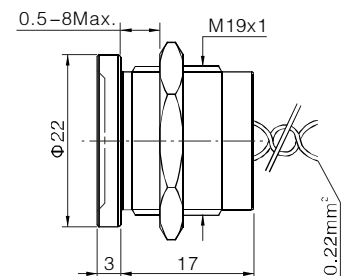
PS193P10Y◆1



Non-illuminated – operator height 3mm, with finger location



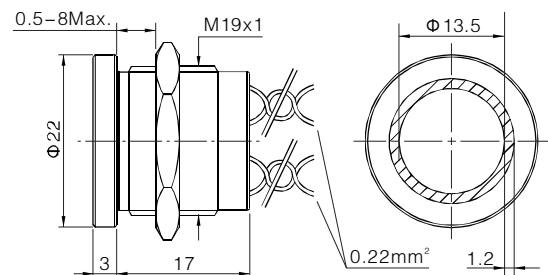
PS193Z10Y◆1



With thin illuminated ring, operator height 3mm, flat



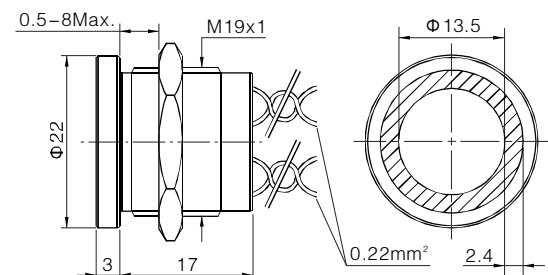
PS193PY◆1△▲



With large illuminated ring, operator height 3 mm, with chamfer



PS193CY◆1△▲

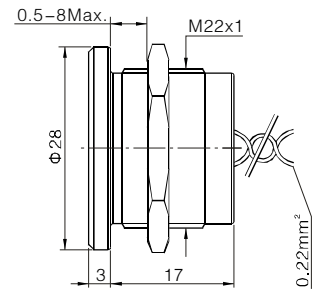


◆	△	▲
Colours / Materials	LED colour	Lamp voltage
Colours / Materials	Blank Non-illum.	Blank Non-illum.
NT Natural anodized	R Red	05T thin ring – 5VDC
BU Blue anodized	G Green	12T thin ring – 12VDC
BK Black anodized	Y Yellow	24T thin ring – 24VDC
GD Gold anodized	O Orange	05L large ring – 5VDC
RD Red anodized	B Blue	12L large ring – 12VDC
SS Stainless steel	W White	24L large ring – 24VDC

Non-illuminated, operator height 3 mm, flat



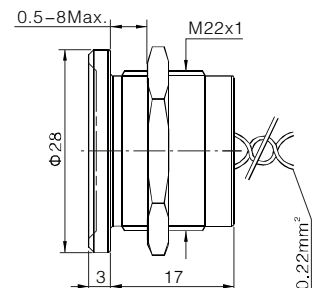
PS223PY◆1



Non-illuminated, operator height 3 mm, with finger location



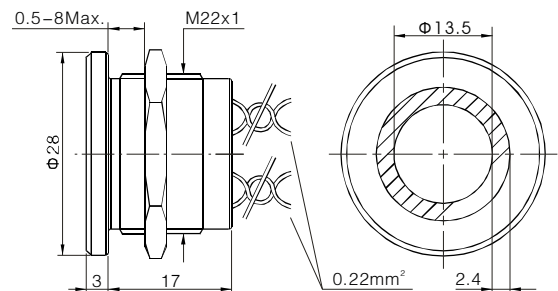
PS223ZY◆1



With thin illuminated ring – operator height 4,50, flat



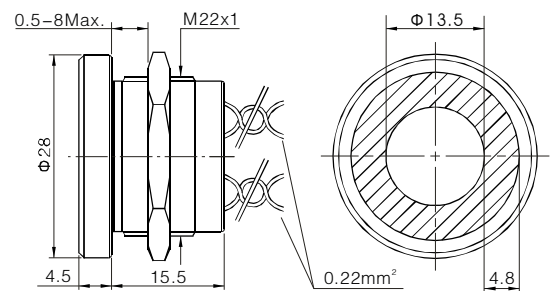
PS223PY◆1△▲



With large illuminated ring, operator height 4,50, flat

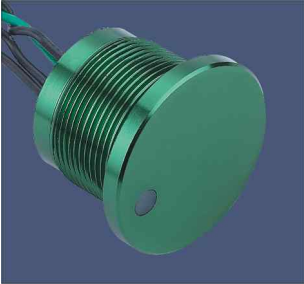


PS225PY◆1△▲

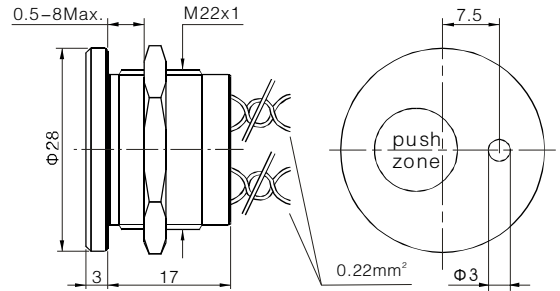


◆ Colours / Materials	△ LED colour	▲ Lamp voltage	
NT Natural anodized	Blank Non-illum.	Blank Non-illum.	
BU Blue anodized	R Red	05D dot – 5VDC	05L large ring – 5VDC
BK Black anodized	G Green	12D dot – 12VDC	12L large ring – 12VDC
GD Gold anodized	Y Yellow	24D dot – 24VDC	24L large ring – 24VDC
RD Red anodized	O Orange	05T thin ring – 5VDC	
SS Stainless steel	B Blue	12T thin ring – 12VDC	
	W White	24T thin ring – 24VDC	

With illuminated dot, operator height 3 mm, flat



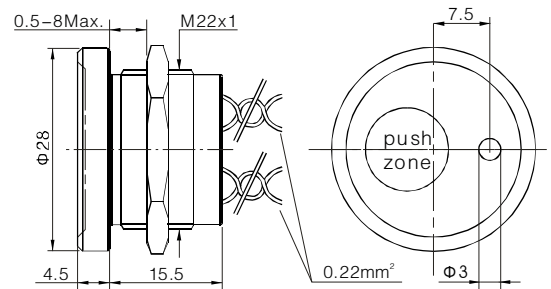
PS223P10Y◆1△▲D



With illuminated dot, operator height 4.50 mm, with finger location



PS225Z10Y◆1△▲D



◆ Colours / Materials	△ LED colour	▲ Lamp voltage	
NT Natural anodized	Blank Non-illum.	Blank Non-illum.	
BU Blue anodized	R Red	05D dot – 5VDC	05L large ring – 5VDC
BK Black anodized	G Green	12D dot – 12VDC	12L large ring – 12VDC
GD Gold anodized	Y Yellow	24D dot – 24VDC	24L large ring – 24VDC
RD Red anodized	O Orange	05T thin ring – 5VDC	
SS Stainless steel	B Blue	12T thin ring – 12VDC	
	W White	24T thin ring – 24VDC	



Shower
(IP68 sealing)



Home automation
(design, customization)



Bath
(IP69 sealing, customization)



Car wash
(IP68 sealing, long life)



Matine
(IP68 sealing, design)



Medical
(easy to clean surface, no retention area)



Food processing
(IP69K sealing)



Mining
(ATEX versions)