

Features

- High switching capability : 15A.
- Microminiature, standard PCB terminal.
- Sealed type available.

Contact Capacity

Model	SARM
Nominal switching capacity (res. load)	15A 14VDC
Max. switching current	15A
Max. switching voltage	30VDC
Max. switching power	210W

Characteristic Data

Contact material	Silver alloy	
Initial contact resistance (at 6VDC 1A)	100mΩ Max.	
Operate time (at nominal volt.)	8msec. Max.	
Release time (at nominal volt.)	5msec. Max.	
Initial insulation resistance	100MΩ Min.(DC500V)	
Initial dielectric strength	Between open contacts : AC750V , 50/60Hz 1Min.	
	Between coil and contact :AC1,000V , 50/60Hz 1Min.	
Vibration resistance	Functional	10 ~ 55Hz at double amplitude of 1.5 mm
	Destructive	10 ~ 55Hz at double amplitude of 1.5 mm
Shock resistance	Functional	10G Min.
	Destructive	100G Min.
Endurance (operations)	Mechanical (at 10,800 ops./h)	10,000,000
	Electrical (at 900 ops./h)	100,000
Ambient temperature	-40°C ~ +105°C (no condensation) Please contact us if your working condition is above 85°C	
Unit weight	Approx. 8.5 g	

Coil Data (at 20Ω)

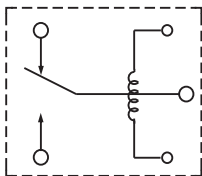
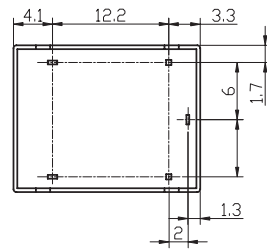
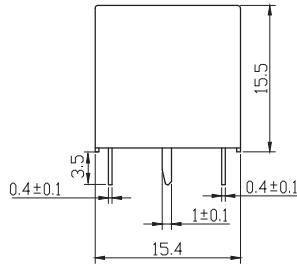
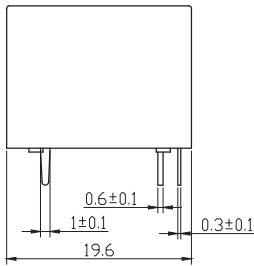
Nominal voltage (VDC)	Nominal operating current ±10% (mA)	Coil resistance ±10% (Ω)	Max. allowable voltage	Pick-up voltage (Max.)	Drop-out voltage (Min.)	Nominal operating power
6	133.3	45	130 % of nominal voltage	60 % of nominal voltage	10 % of nominal voltage	Approx. 0.80W
9	88.8	101				
12	66.7	180				
24	33.3	720				

Ordering Information

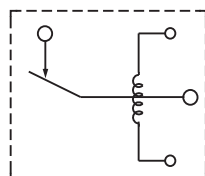
Nomenclature

SARM	- S	- 1	12	D	M	1	- XX	
								Special Parameter : Nil-Standard type, Letter or number-Special requirement
								Moveable Contact Material :
		FormC	Form A					FormB
		Nil-AgSnO ₂ φ2.8	Nil-AgSnO ₂ φ3.0					Nil-AgSnO ₂ φ3.0
		1-AgCdOφ2.8	1-AgCdOφ3.0					1-AgCdOφ3.0
		2-AgSnO ₂ φ3.0	6-AgNi φ3.0					
		3-AgCdOφ3.0						
		4-3 Compounds φ3.0						
		5-Cu plated with La φ3.0						
		6-AgNi φ3.0						
								all stationary contact specified: φ3.0 (moveable contact of AgCdO fit with AgCdO other moveable contact are all suitable with AgSnO ₂)
								Contact Form : Nil-Form C, B-Form B, M-Form A
								Coil Power : D-0.80W
								Coil Voltage (VDC) : 06, 09, 12, 24
								Number of Poles : 1-1 Pole
								Protective Construction : S-Flux proofed, SH-Sealed type washable
								Type Designation : SARM

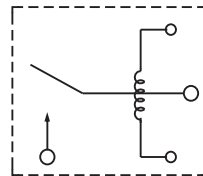
Outline Dimensions, Wiring Diagram, P.C.Board Layout (unit : mm)



1c



1b



1a

Wiring Diagram (bottom view)

Unless otherwise specified :

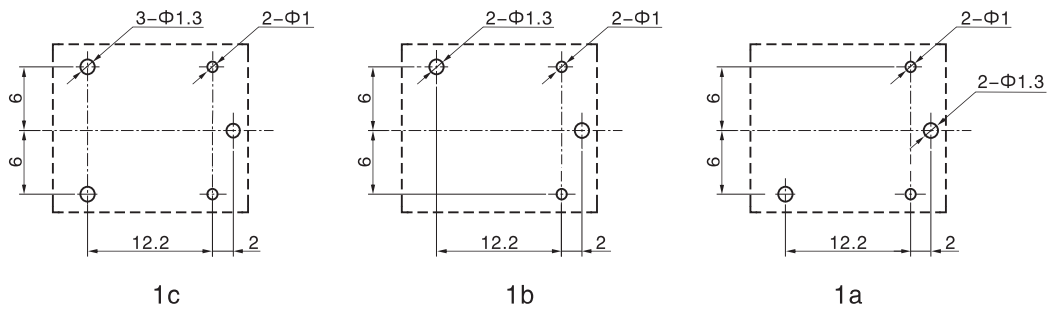
If dimension < 1mm, tolerance : ±0.2mm;

If dimension 1~5mm, tolerance : ±0.3mm;

If dimension > 5mm, tolerance : ±0.4mm.

Note : 1. Extended terminal dimension is dimension before soldering.

2. Tolerance of P.C.B. layout : ±0.1mm.

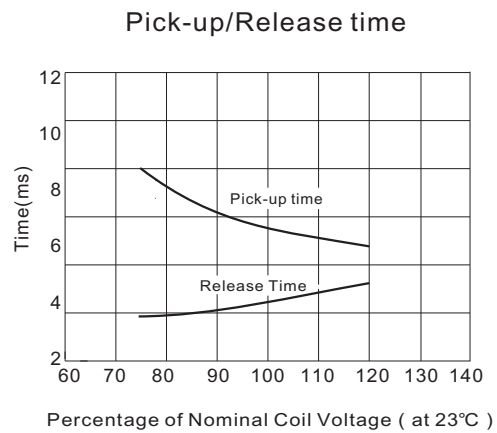
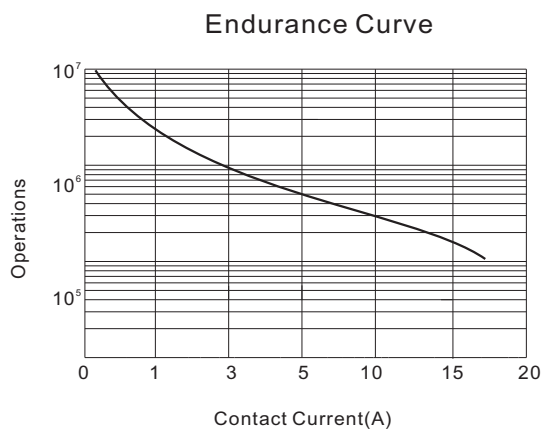


P.C.B. Layout (bottom view)

Typical Applications

- Home appliances such as air conditioner, electric heater, etc. • Automat
- Office equipment such as computer, fax machine, etc.
- Automatic power window, car antenna, door lock, etc.

Characteristic Curves



Disclaimer:

This datasheet is the customers' reference. All the specification are subject to change without notice.

We could not evaluate all the performance and all the parameters for every possible application. Thus the user should in a right position to choose the suitable product for their own application. If there is any query, please contact Sanyou for the technical service. However it is the user's responsibility to determine which product should be used only.